

CANDELAS SOUTH RESIDENTIAL MASTER DEVELOPMENT PLAN

A PARCEL OF LAND LOCATED IN SECTION 23 AND THE NORTHWEST QUARTER OF SECTION 24,
TOWNSHIP 2 SOUTH, RANGE 70 WEST OF THE SIXTH PRINCIPAL MERIDIAN,
CITY OF ARVADA, COUNTY OF JEFFERSON, STATE OF COLORADO

PARKS AND OPEN SPACE

PARKS ARE LOCATED WITHIN THE COMMUNITY TO SERVE AS FOCAL POINTS AND GATHERING HUBS WITHIN THE COMMUNITIES. THE PARKS ARE PROGRAMMED WITH A VARIETY OF ELEMENTS TO PROMOTE BOTH ACTIVE AND PASSIVE USES AND WILL BE DESIGNED FOR VARIOUS AGE GROUPS. BOTH TRADITIONAL PLAY AND NATURE PLAN ELEMENTS WILL BE PROVIDED, ALONG WITH PROGRAM ELEMENTS TO SUPPORT A UNIQUE THEME FOR EACH PARK.

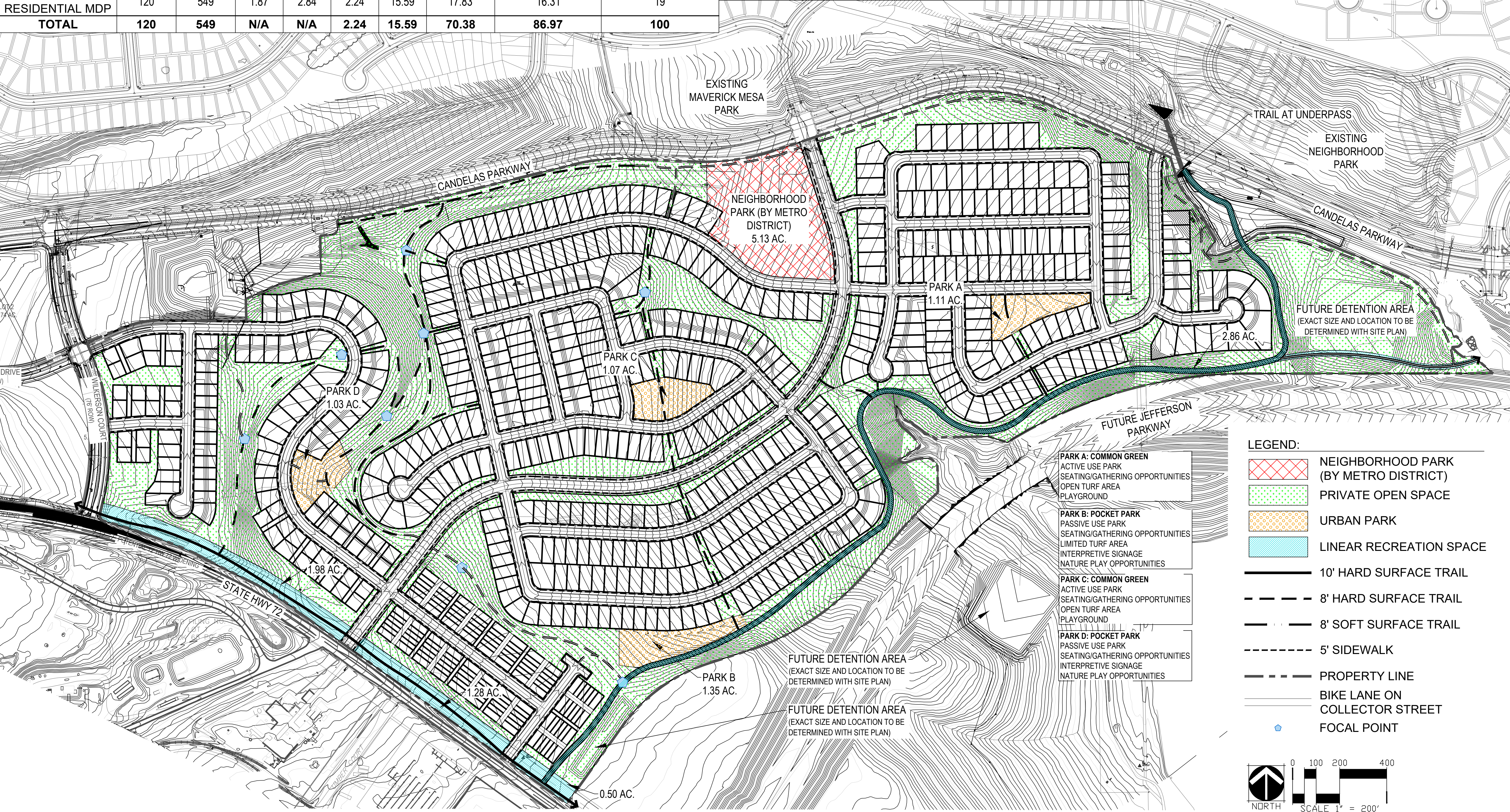
THE OPEN SPACE AND TRAIL NETWORK WILL BE ENHANCED WITH THEMED NODES IN SELECT LOCATIONS. OVERLOOK NODES WILL BE DESIGNED TO TAKE ADVANTAGE OF KEY VIEW CORRIDORS WITHIN THE SITE. ADDITIONAL INTERPRETIVE NODES WILL FOCUS ON POLLINATOR GARDENS, WATER CONSERVATION IN THE LANDSCAPE, AND OTHER THEMED PROGRAM ELEMENTS TO SUPPORT THE OVERALL BRAND AND IDENTITY OF THE COMMUNITY.

PUBLIC LAND DEDICATION

	TOTAL PROPOSED		MULTIPLIER		TOTAL PARKS REQUIRED			TOTAL PARKS PROVIDED	
	SFA	SFD	SFA	SFD	SFA	SFD	OVERALL	OVERALL ACRES	% OF TOTAL PARKS
CURRENT CANDELAS PARKS	-	-	-	-	-	-	52.55	70.66	81
CANDELAS SOUTH RESIDENTIAL MDP	120	549	1.87	2.84	2.24	15.59	17.83	16.31	19
TOTAL	120	549	N/A	N/A	2.24	15.59	70.38	86.97	100

PROPOSED PARKS AND OPEN SPACE

TYPE	PUBLIC LAND DEDICATION
NEIGHBORHOOD PARK	5.13
URBAN PARKS	4.56
LINEAR RECREATION SPACE	6.62
TOTAL	16.31



CANDELAS SOUTH RESIDENTIAL
MASTER DEVELOPMENT PLAN
CITY OF ARVADA

OWNER:
CIMARRON COMMERCIAL
2009 HIGHWAY 72
ARVADA, CO 80007

NOT FOR
CONSTRUCTION

DATE:
07/24/2020 MDP-01

SHEET TITLE:
PARKS AND OPEN
SPACE