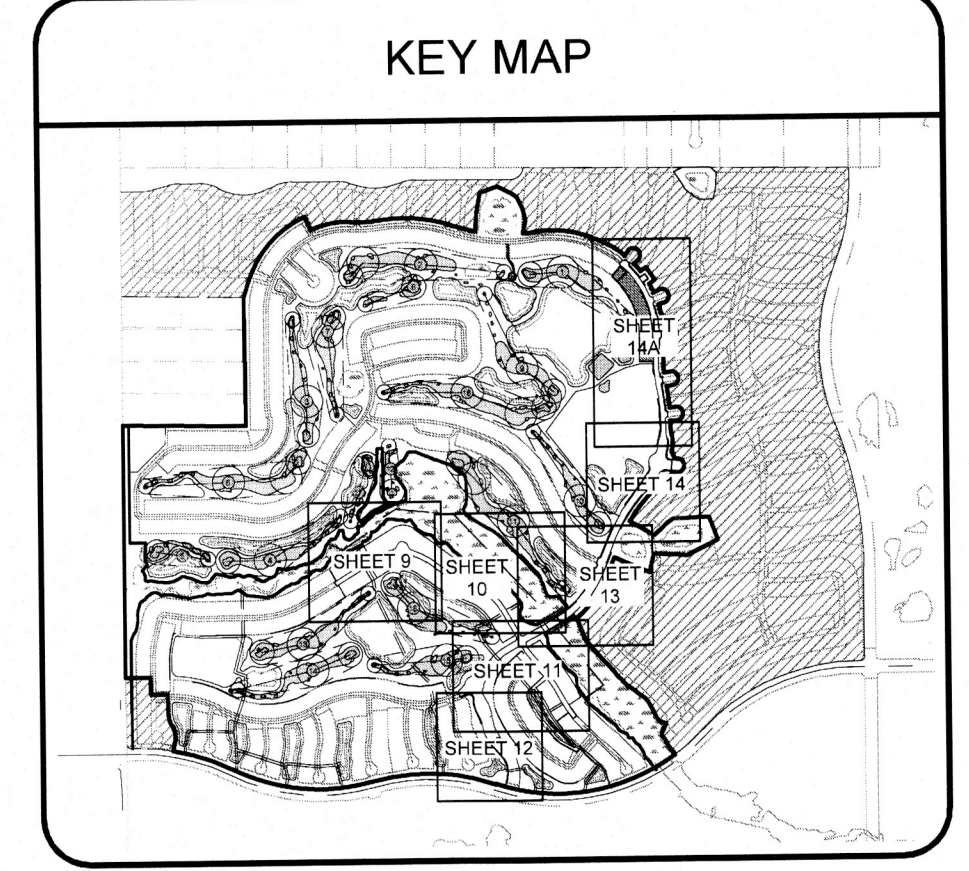
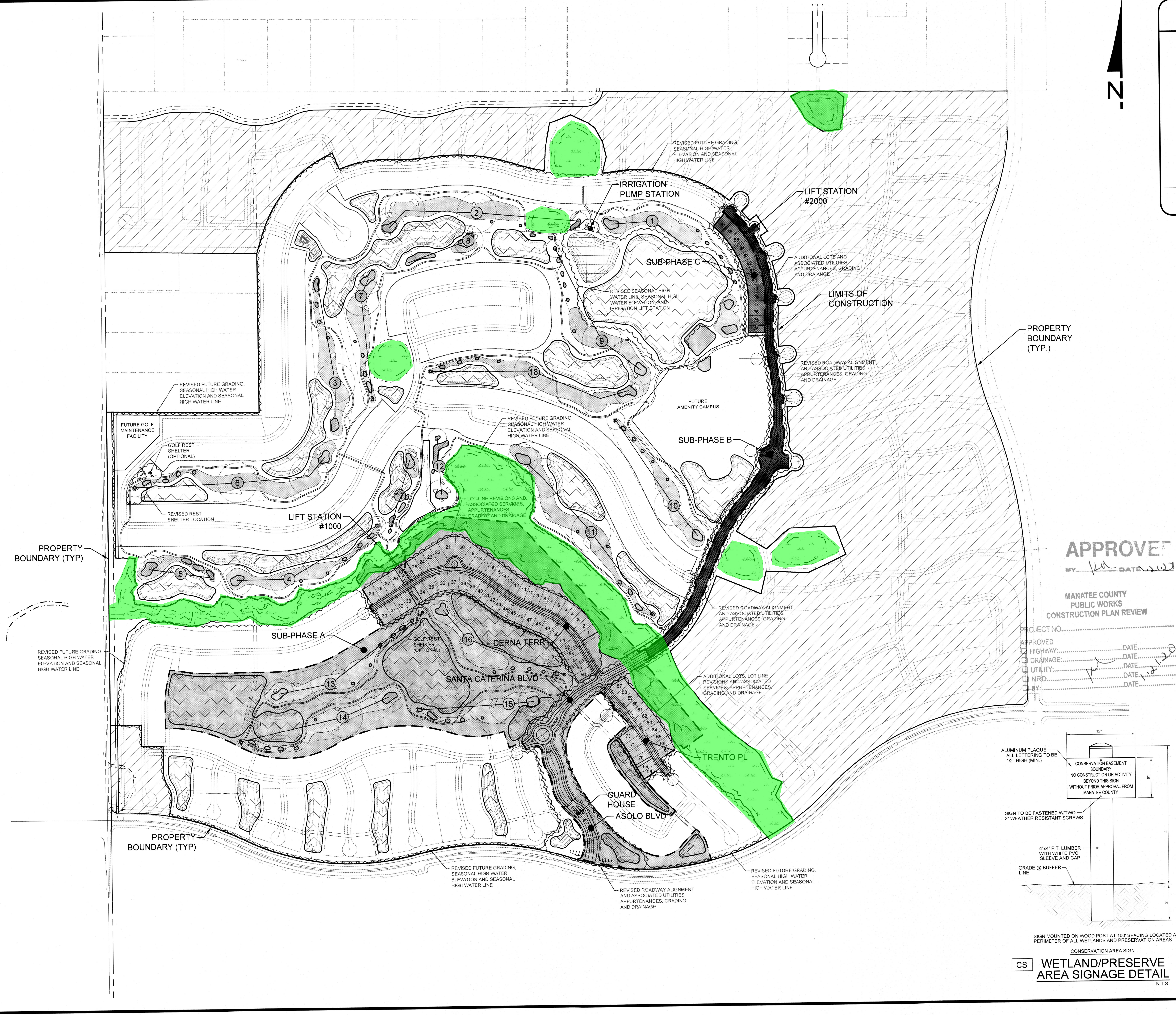


B:\Projects\597-27 (LWR 1000) Phase I Preliminary FSP & CSP Drawings-Exhibit\597-07-01 Phase I FSP & CSP Plans\Current Plans\597070107.dwg  
12/18/2014 4:16:44 PM



SIGNAGE LEGEND	
	30" x 30" STOP SIGN (R1-1) AND STREET NAME (D-3) WITH 24" SOLID WHITE STOP BAR
	100 BLVD
	102 ST
	201 CT
	1000 LANE
	DIVIDED MEDIAN SIGN (R4-7)
	SPEED LIMIT SIGN (R2-1)
	UNLESS OTHERWISE POSTED (R2-6P)
	SIDEWALK CURB RAMPS & DETECTABLE WARNING PER PER FOOT INCHES NO. 304 (2014) SEE SHEET 41 FOR VALLEY CURB CONFIGURATION AT HANDICAPPED RAMP LOCATIONS DETAIL
	END OF ROADWAY MARKER (OM4-1) 9-BUTTON, RED 18' x 18' (TYP.)
	TYPE I OBJECT MARKER (OM1-1) 9-BUTTON, YELLOW 18' x 18' (TYP.)
	DEAD END SIGN (W14-1)
	ROAD CLOSED SIGN (R11-2)
	YIELD SIGN (R1-2)
	STOP HERE FOR PEDESTRIANS SIGN (R1-5C)
	PEDESTRIAN CROSSING SIGN (W11-2)
	CIRCULAR INTERSECTION SIGN (W2-6)
	SUPPLEMENTAL "AHEAD" PLAQUE (W16-6P)
	CONSERVATION SIGN (SEE DETAIL THIS SHEET)

PHASE I LEGEND	
	SUB-PHASE A
	SUB-PHASE B
	SUB-PHASE C
	FUTURE DEVELOPMENT

ADDITIONAL SUB-PHASE

**WALDROP ENGINEERING**

CIVIL ENGINEERING & LAND DEVELOPMENT CONSULTANTS  
25100 BONITA GRANDE DRIVE - SUITE 305 BONITA SPRINGS, FL 34135  
P: 239-405-7777 F: 239-405-7999 EMAIL: info@waldropengineering.com

PSP, FSP, PRELIMINARY SUBDIVISION PLAT AND CONSTRUCTION PLANS FOR:  
**AZARIO, ESPLANADE, PHASE I**  
CLIENT: TAYLOR MORRISON OF FLORIDA, INC.

MASTER SITE & PHASING PLAN

PLAN REVISIONS	09/10/18 REVISED PER CLIENT, ENGINEER & COUNTY COMMENTS
11/20/18	REVISED PER COUNTY & ENGINEER COMMENTS
09/05/19	REVISED PER COUNTY & ENGINEER COMMENTS

FLORIDA CERTIFICATE OF PROFESSIONAL ENGINEER  
JEREMY H. ARNO  
No. 66421  
STATE OF FLORIDA  
JEREMY H. ARNO  
FLORIDA LICENSE NO. 66421

SET NUMBER: 597-07-01

SHEET: 7

ELEVATIONS ARE BASED ON: NAVD - 88