

Skye Ranch ECHO Park

Taylor Morrison Site - Waldrop Engineering

Sarasota, FL

Sketch Plan

September 2020

0' 10' 20' 30' 40'

Scale: 1" = 10'



* When printed at 24" x 36" size

This image is conceptual and for graphic purposes only. Plans are subject to change.



Key	
1	MAINTENANCE/EMERGENCY ENTRANCE GATE
2	PRIMARY CONCRETE PATH - 6' WIDE
3	SECONDARY PATH - 3' WIDE AND SECRET NOOK
4	STEPPING STUMPS & VERTICAL LOG FOREST
5	NARROW BOARDWALKS THROUGH "FOREST"
6	KOMPAN - DOUBLE TOWER / TURBO CHALLENGE
7	ROCKWALL BUILT INTO HILL*
8	LOOKOUT DECK ON TOP OF HILL (WITH STEPS)
9	SECONDARY PATH WINDING UP HILL - 3' WIDE
10	OPEN LAWN WITH HILL SLOPING UP TO DECK
11	DISCOVERY BOARDWALK & SECRET NOOKS
12	PALM TREE PROMENADE
13	SAND AREA WITH VERTICAL LOG CENTER
14	CONCRETE SEATWALL SLOPING UP INTO ADA TABLE
15	MAIN ENTRANCE
16	SHADED GATHERING SPACE / STROLLER PARKING
17	ENTRY PATH WITH SCULPTURAL ARBORS
18	KOMPAN - PLAY TOWER WITH SLIDE & DESK
19	BENCHES
20	MANHOLE TO BE RELOCATED IF POSSIBLE
21	LOG / STUMP LOW BALANCING AREA
22	LARGE ACCESSIBLE LOOKOUT DECK
23	KOMPAN - VILLAGE HOUSE, SHOP, & TABLE
24	VEGETATED ARCHWAY
25	KOMPAN - MUSIC PANELS
26	SMALL ACCESSIBLE LOOKOUT DECK
27	PLATFORM DECK
• POTENTIAL TREES (BLACK DOTS)	

STEPPING STUMPS



VERTICAL LOG FOREST



NARROW BOARDWALKS



ROCKWALL BUILT INTO HILL

*IF POSSIBLE WITH BUDGET; ALTERNATIVE - STUMP STEPPERS BUILT INTO HILL



SECONDARY PATH WINDING UP HILL



DISCOVERY BOARDWALK



Skye Ranch ECHO Park
Taylor Morrison Site - Waldrop Engineering
Sarasota, FL

Sketch Plan & Reference Photos
September 2020

0' 20' 40' 60' 80'
Scale: 1" = 20'
North
* When printed at 24" x 36" size
This image is conceptual and for graphic purposes only. Plans are subject to change.

PALM TREE PROMENADE



VERTICAL LOG CENTER (IN SAND AREA; CAN SUPPORT SHADE SAIL)



CONCRETE SEATWALL (TO RETAIN SAND AND VEGETATION)



ACCESSIBLE SAND TABLE (TO BE BUILT INTO SEATWALL)



SHADED GATHERING SPACE & ENTRY TRANSITION



LOG / STUMP BALANCING AREA



VEGETATED ARCHWAY



PLATFORM DECK



UPRIGHT LOG CIRCLE (COULD GO IN ONE OF THE NOOKS?)



AESTHETIC - THATCH / NETTING / BOARDWALK / VEGETATION



AESTHETIC - POST & ROPE BORDERS / PLANT PROTECTION



AESTHETIC - CRUSHED SHELL PATHWAYS / VEGETATION



Skye Ranch ECHO Park
Taylor Morrison Site - Waldrop Engineering

Sarasota, FL

Reference Photos

September 2020

KOMPAN - DOUBLE TOWER / TURBO CHALLENGE



KOMPAN - PLAY TOWER WITH SLIDE & DESK



KOMPAN - VILLAGE HOUSE



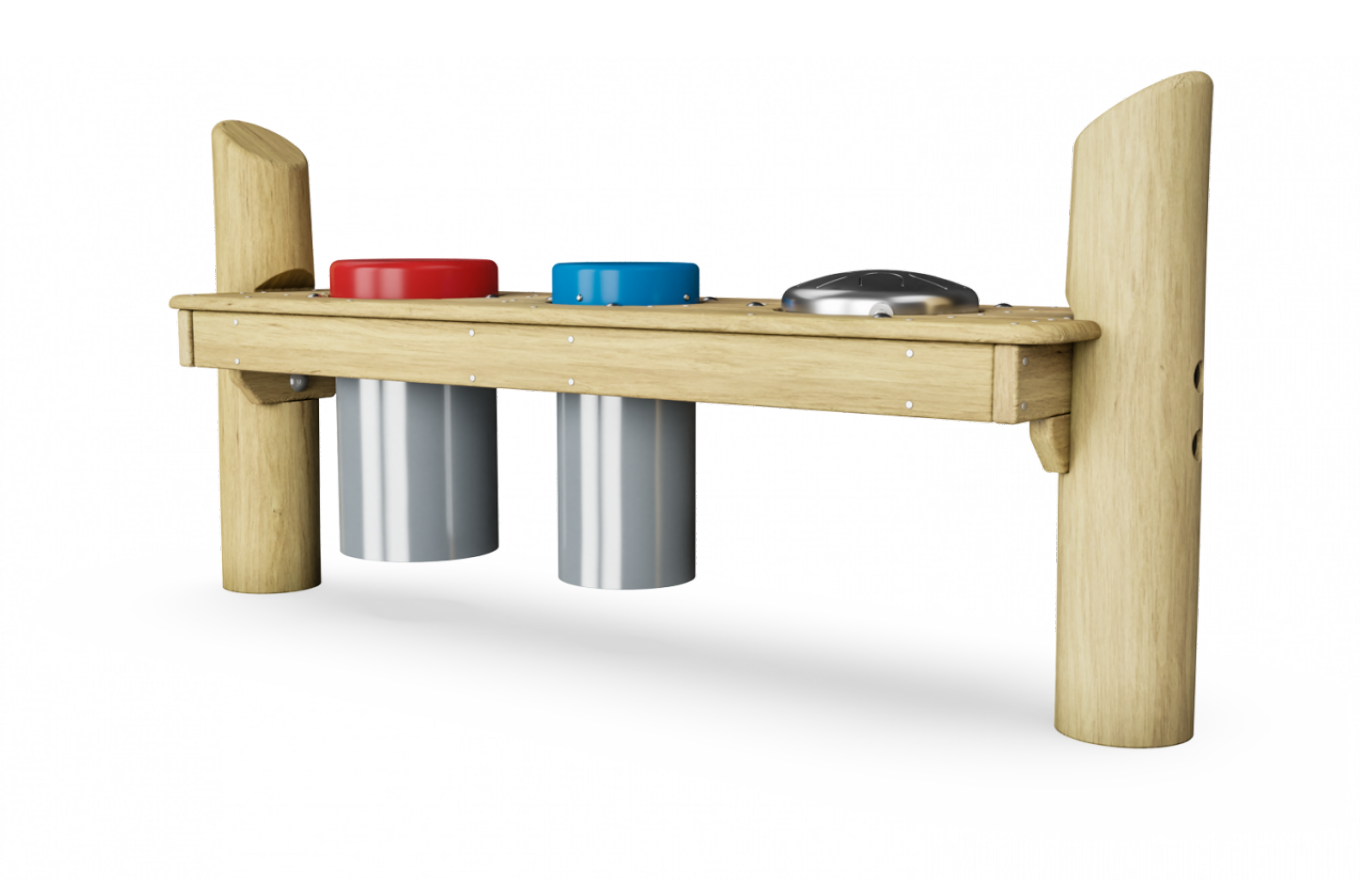
KOMPAN - VILLAGE SHOP



KOMPAN - MUSIC PANEL



KOMPAN - MUSIC PANEL



KOMPAN - KIDS TABLE

