

## LANDSCAPE / SITE ELEMENTS

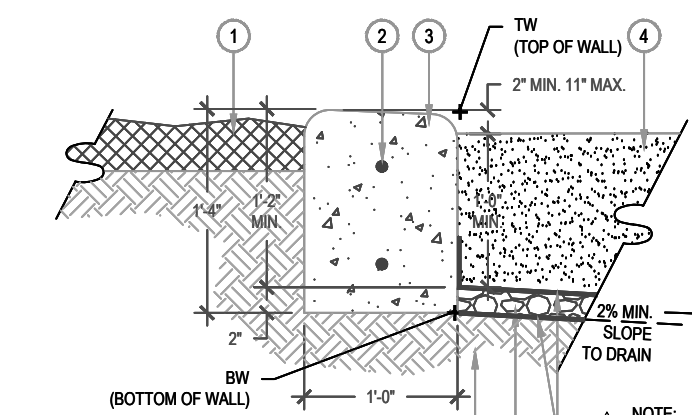
- CONC. PERIMETER WALK, PER CIVIL ENG.
- NEW 10 FT. WIDE CONC. PATH, VEHICULAR RATED PER DETAIL 3-10, SHEET L-16.
- REMEDY OFF-SITE SOIL DISTURBANCE- RAKE / REMOVE CLODS AND DEBRIS, ADD 3" LAYER WOOD CHIP MULCH.
- MASONRY WALL PER. CIVIL ENG. SHEET W-1. MATERIAL DESIGN PER DETAIL A, SHEET L-1. NO CONSTRUCTION ON PRIVATE PARCELS.
- CONCRETE MOW CURB AT TURF / P.L. / D.G. WALKS PER CITY STANDARD DETAIL 4.23, SHEET L-16.
- COMPACTED AND SEALED D.G. OVER ROAD BASE PER DETAIL A, THIS SHEET 5,000 S.F. TOTAL. CONC. DRAIN INLET W/ CAST IRON LOCKING GRATE PER DETAIL B, SHEET L-2. RIM AND INVERT EL. PER PLAN, 3 FT. MIN. CLEAR OF POTABLE WATER LINE. PLACE 12" MIN. WIDE COBBLE COLLAR AT INLET, TYPICAL.
- SANDSTONE BOULDERS, 2' X 4' MIN. MATCH SOURCE BY CITY OF VACAVILLE PARKS DEPT.-LAGOON VALLEY DETAIL A, SHEET L-11.
- (1) DOUBLE PANEL 100" SUBMETER PER DETAIL A, SHEET L-11.
- NUMBERED TREE TO REMAIN, SEE SHEET L-1 FOR FOR SPECIES, SIZE, SEE DETAIL A, SHEET L-5 FOR PROTECTION MEASURES DURING CONSTRUCTION.
- CONCRETE PICNIC BENCH PER CITY STANDARD DETAIL 4.11, SHEET L-16.
- BBO STANDS PER DETAIL D, THIS SHEET.
- STEEL FRAME AND ROOF SHADE STRUCTURE, PER DETAILS C AND D, SHEET L-16.
- INTERPRETIVE SIGN FRAME PER DETAIL E, SHEET L-16. OWNER TO SUBMIT INTERPRETIVE SIGN GRAPHICS AND TEXT IN DIGITAL AND PRINTED FORM TO CITY OF VACAVILLE PARKS DEPT. FOR APPROVAL PRIOR TO FABRICATION.
- PARK BENCH AT CONC. PAD PER DETAIL A, SHEET L-16.
- PARK REGULATIONS SIGN PER DETAIL 4.30, SHEET L-16.
- PARK NAME MONUMENT PER CITY STANDARD DETAIL 4.6, SHEET L-16.
- TRASH TOTER PAD AND ANCHOR POST PER DETAIL 4.31, SHEET L-16.
- SECONDARY ENTRY PILLAR PER DETAIL B, SHEET L-17.
- PRIMARY ENTRY MONUMENT PER DETAIL A, C AND D, SHEET L-17 AND STRUCTURAL DETAILS S-1, S-2 AND S-3.
- S.I.D. EASEMENT, NO CONSTRUCTION WITHIN EASEMENT.
- 6 FT. TALL TUBE STEEL FENCE PER DETAIL B, SHEET L-17, 688 LIN. FT.
- 8 FT. WIDE DOUBLE DOUBLE SWING GATE PER DETAIL C, SHEET L-16, MATCH #22 FOR HEIGHT AND FINISH.
- SEE CIVIL IMPROVEMENT PLANS, SHEET D3 FOR STORM DRAIN SYSTEM CONNECTION.
- 4 FT. PLANTING AND IRRIGATION SETBACK AT WALKS, CURBS, WALLS AND SIGNS. SEE DETAIL A, SHEET L-10.
- INFORMAL GROUP USE AREA.
- CENTERLINE, VEGETATED SWALE PER CIVIL, PLANTING PER DETAIL A, SHEET L-6.
- (2) 1-1/2" IRRIGATION METERS, CONNECTION MANIFOLDS AND BOOSTER PUMPS PER DETAIL A, SHEET L-12.
- THRU-CURB DRAIN PER DETAIL C, THIS SHEET.
- 6" CONC. CURB PER CIVIL ENG., 207 LIN. FT. TOTAL.
- 6 FT. WIDE CONC. WALK PER DETAIL 4.26, SHEET L-17.
- REMOVABLE BOLLARDS AT MULTI-USE TRAIL PER CIVIL.
- 1/4" WIDTH X 5" DEPTH STEEL HEADER BY "SURE-LOC" SUPPLY, SEE DETAIL F, SHEET L-6.
- 1" POLYETHYLENE WATER LINE, SINGLE RUN, NO JOINTS 24" MIN. COVER, SINGLE STRAND, #10 AWG JACKETED SOFT COPPER WIRE ATOP WATER LINE, SECURE WITH TAPE EVERY 10 FT. O.C. TIE TO 3/4" R.P.B. AFTER PARK DEPT. METER "B", SEE DETAIL A, SHEET L-12. BACKFLOW PER DETAIL 5-16, SHEET L-16, B.
- DRAINAGE FOUNDATION, SEE DETAIL A, SHEET L-16, B. SET ON 5' X 10' CONC. SLAB, CENTER AND 18" MIN. FROM EAST EDGE AS SHOWN. 5' X 5' CLEAR MIN. FOR A.D.A.
- SUMP DRAIN AND PERCOLATION LINES PER DETAIL B, C AND D, SHEET L-16, B.
- AS-BUILT ROUTING OF ELECTRICAL SUPPLY FOR FOR PARK INTERIOR LIGHTS.
- EXCAVATE 8" EXISTING SOIL BETWEEN MASONRY WALL AND DRIVEWAY. COMPACT NATIVE SOIL AND PLACE 4" CLASS II A.B. COMPACT TO 90% R.C. POUR 4" THICK CONCRETE SLAB AND SURFACE WITH 4"-6" LODI GOLD OR SIMILAR. GROUT 1/3 OF COBBLE DEPTH.

## GRADING LEGEND

- FG FINISH GRADE AT LANDSCAPE  
FS FINISH SURFACE AT CONCRETE OR D.G.  
HP HIGH POINT  
RIM RIM EL. OF DRAIN INLET  
INV. INVERT ELEVATION  
INL. INLET ELEVATION  
DIRECTION OF SURFACE FLOW  
DOUBLE WALL HDPE DRAINLINE, SMOOTH INTERIOR WALL, 8" MIN. COVER, SIZE AND LENGTH PER PLAN, 1% MIN. SLOPE  
PERCENT SLOPE AT FINISH SURFACE / GRADE
- 4%  
FG 00.00  
EX 00.00  
NEW LANDSCAPE ELEVATION  
EXISTING ELEVATION TO REMAIN (SEE CIVIL FOR SURVEY)

## ECHO PLAY AREA NOTES

- REFER TO GRADING PLAN, SHEET L-2.
  - ENGINEERED WOOD FIBER (EWF), DEPTH SHOULD BE NO LESS THAN 12" AND COMPLY WITH ASTM F1292 AND ASTM F1951 FOR FIRMNESS, STABILITY AND ACCESSIBILITY. SEE DETAIL C, THIS SHEET APPROX. 1055 S.F.
  - PLANTED AREA: RE INSTALL PLANTS THAT WERE MOVED FOR ECHO PLAYScape- VERIFY ON SITE TYPE AND NUMBER OF PLANTS.
  - INSTALL 12" PLAYGROUND CURB AROUND ENTIRE PERIMETER OF PLAYScape, DETAIL A, THIS SHEET, APPROX. 135 LF.
  - CONNECT 6" SCH. 80 PVC PERFORATED DRAIN PIPE, TO EXISTING 12" STORM DRAIN, SEE DETAIL B, THIS SHEET AND GRADING NOTE M, SHEET L-2. VERIFY CONNECTION POINT AND ELEVATION AT EXISTING DRAINLINE PER CIVIL ENG. SEE KEY NOTE #7 FOR INLET.
  - LINKED PLAY FEATURES: BALANCE BEAM AND STEPPERS. SEE DETAILS SHEET L-2B FOR MORE INFORMATION.
  - CONCRETE TRANSITION RAMP, SEE DETAIL B, THIS SHEET.
  - GAMETIME PLAY EQUIPMENT:
    - MUSHROOM CLIMBERS: 7 TOTAL
    - STUMP STEPPERS: 5 TOTAL
    - LOG BALANCE BEAM: 1 TOTAL
- \* NOTE: ALL OTHER NOTES FROM SHEET L-2 SHALL APPLY.



- NOTE:  
1. THE DEPTH OF THE CURB SHALL NOT VARY, SLOPES SURROUNDING PLAYGROUND PIT ARE VERY FLAT (1% MIN.) IN NO CASE SHALL THE GRADE WITHIN THE PLAYGROUND PITS BE GREATER THAN 2.5% (SEE GRADING PLAN ABOVE).  
2. SCORE JOINTS SHALL BE SPACED 5' O.C. AND RUN THROUGH TOP AND SIDES OF CURB

FREE STANDING CONCRETE PLAYGROUND CURB  
NOT TO SCALE

PLAYGROUND RAMP  
NOT TO SCALE

FIBAR SOURCE, PLACEMENT AND WARRANTY  
NOT TO SCALE

APPROVED BY:

BRIAN MCLEAN  
CITY OF VACAVILLE  
DIRECTOR OF PUBLIC WORKS

DATE:

APPROVED BY:

PEYMAN BEHVAND  
CITY OF VACAVILLE  
CITY PLANNER

DATE:

APPROVED BY:

REGGIE HUBBARD  
CITY OF VACAVILLE  
INTERIM DIRECTOR OF PARKS AND RECREATION

DATE:

MARK	DATE	DESCRIPTION
1	21 APR. 2022	GAMETIME - ECHO PLAY EQUIP.
2	20 JAN., 2023	POTABLE WATER AND LIGHTING SUPPLY DRAINAGE AND LAYOUT AT ECHO PLAY CITY COMMENTS AT CONST. DETAILS COBBLE IN-FILL AT FALLOW STRIPS ADDITIONAL POLLINATOR PLANTING

## ECHO Playground addition

SCALE:	1" = 10'-0"	CLIENT NO.:	
DATE:	20 JAN., 2023	PROJECT NO.:	00719
DRAWN:			
APPROVED:			
L-2A			
FILE NAME: _00719Layout.dwg			



Great Valley Design, Inc.

Regionally Appropriate Landscapes

1219 Spruce Lane

Davis, CA

(530) 231.5890

www.grvalley.com

California Registered Landscape Architect # 4740



Farmstead

Park and Trail Landscapes

Vacaville, CA

APPROVED BY:

BRIAN MCLEAN  
CITY OF VACAVILLE  
DIRECTOR OF PUBLIC WORKS

DATE:

APPROVED BY:

PEYMAN BEHVAND  
CITY OF VACAVILLE  
CITY PLANNER

DATE:

APPROVED BY:

REGGIE HUBBARD  
CITY OF VACAVILLE  
INTERIM DIRECTOR OF PARKS AND RECREATION

DATE:

MARK	DATE	DESCRIPTION
------	------	-------------

21 APR. 2022 GAMETIME - ECHO PLAY EQUIP.

20 JAN., 2023 POTABLE WATER AND LIGHTING SUPPLY  
DRAINAGE AND LAYOUT AT ECHO PLAY  
CITY COMMENTS AT CONST. DETAILS  
COBBLE IN-FILL AT FALLOW STRIPS  
ADDITIONAL POLLINATOR PLANTING

ECHO Playground Details

SCALE:	PER DETAIL	CLIENT NO.:
DATE:	20 JAN., 2023	PROJECT NO.:

DRAWN:

APPROVED:

FILE NAME: \_00719ECHODTL.dwg

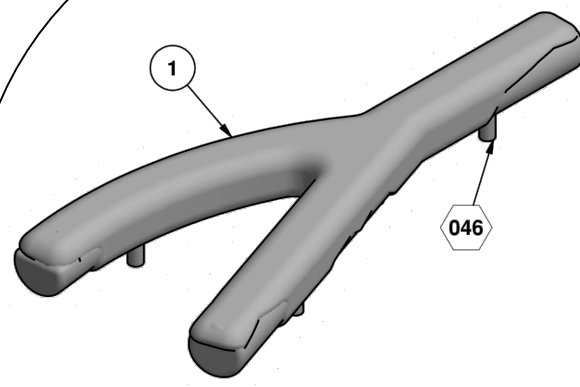
L-2B

38233

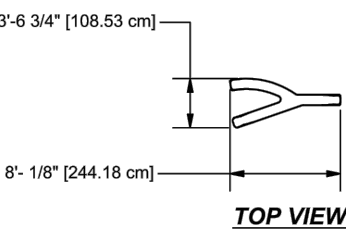
FORKED LOG  
BALANCE LOG

Gametime  
PLAYCOMP  
1-800-235-2440  
ISSUED/REVISED: 04/14/14

INSTALLATION  
DETAIL  
PARTS LIST  
REFERENCE



ASSEMBLY VIEW

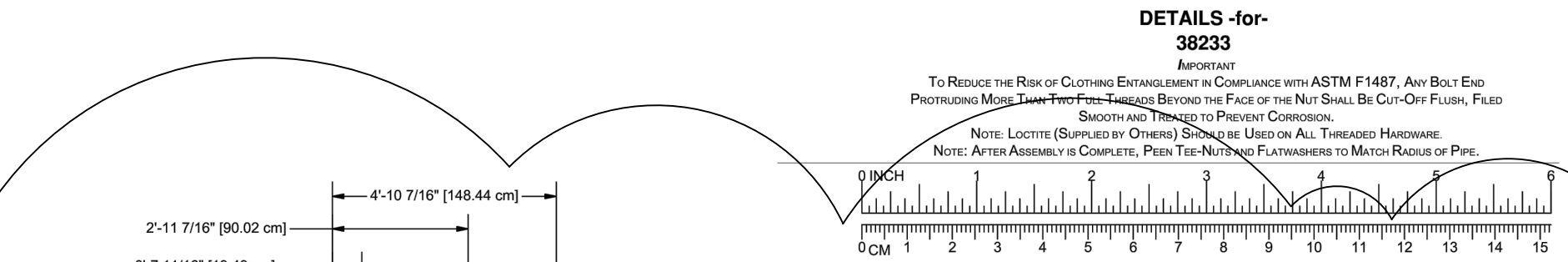


TOP VIEW

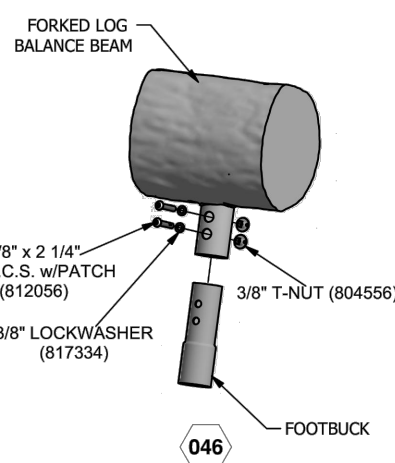
SPECIFICATIONS

Fiberglass Reinforced Cement (GFRC): A cement/aggregate slurry reinforced throughout with chopped glass fibers. Cement used shall be Type I Portland cement meeting the requirement of the ASTM C 150. Sand shall be washed silica sand passing a U.S. No. 20 sieve, and conforming to ASTM C 144. Glass fibers shall be alkali-resistant (AR) fiber specifically designed for use in concrete and chopped to 1"-2" lengths. Thickness of the cast panels shall be a minimum of 5/8" ranging to 1 1/2" depending on the face configuration. Embossing Mortar and

Cement Plaster: Site mixed cement/aggregate meeting the same criteria as 2.01 A, but omitting the glass fibers, for filling the irregular voids between mold-cast panels and/or special themed features. Backup Material: Shall be galvanized steel "diamond lath", tied in place with annealed steel wire and reinforced with #3 or #4 steel reinforcing rods. Minimum physical properties shall be: 1500 pounds per square inch in tension and 5000 pounds per square inch in compression.



GROUND PLAN



DETAILS

NOTE:  
SUGGESTED MINIMUM CONCRETE  
RATING 3000 PSI.

CONCRETE REQUIRED:  
.35 CUBIC YARDS  
.30 CUBIC METERS

FOOTING DETAIL

SHOCK ABSORBING PROPERTIES OF SURFACING MATERIALS VARY. IF YOU DETERMINE THAT LESS THAN 1" OF SURFACING IS REQUIRED, MAKE UP THE DIFFERENCE IN ELEVATION WITH EARTH, BEFORE APPLYING SURFACING.

GENERAL NOTES:

- Inspect all pieces before unloading from truck for damages incurred during shipping.
- Leave as much packaging in place on play features as possible, without interfering with handling, to help protect the finish from damage during placement.
- Due to variables in local soil conditions, footing sizes may vary to meet local codes.
- Actual on-site conditions may vary and may require modifications to installation method.
- Use care and caution while handling play pieces. Make sure all points of contact are protected from lifting straps or other machinery that may damage the piece.
- Bracing materials may be required during installation.

INSTALLATION INSTRUCTIONS

NOTE: THIS SPECIFICATION BOOKLET SHOULD BE KEPT IN CUSTOMER'S FILE FOR FUTURE REFERENCE.

NOTE: Do not over tighten bolts. To over tighten may cause buckling or dimpling of some parts.

NOTE: Read installation instructions thoroughly before starting assembly.

STEP 1: Dig required footing holes.

STEP 2: Attach Footstocks to Log using Detail D46 and place Log in ground holes. Bracing material may be required.

NOTE: If lifting straps are used, they should be nylon to prevent damage to GFRC finish. If any other type of strap is used, use foam padding under the strap to prevent damage to GFRC finish.

NOTE: Lifting strap and lifting machinery rated for 2500 lbs min.

STEP 3: After Log is in place and secured, remove all remaining packaging material. Inspect for blemishes.

REF.	DESCRIPTION	QTY.	PART NUMBER
1	FORKED LOG BALANCE BEAM	1	210011
2	FOOTSTOCK	4	207124
HARDWARE COMPLETE			
3/8" x 2 1/4" P.B.H.C.S. W/PATCH	8	812056*	
3/8" LOCKWASHER	8	817334*	
3/8" T-NUT	8	804558*	

Unless Otherwise Specified, All Units of Measure are Each  
\*Included in Hardware

Warning: During Installation, Hardware and Small Parts Are Choking Hazards  
For Young Children. Store Unused Parts Appropriately Until Assembly is Completed.

Once Assembly is Completed, Remove Any Unused Parts From The Play Environment  
And Dispose/Save Them in A Secure Location.

Note: Peen Tee-Nuts and Flatwashers to match radius of pipe after assembly is complete.

IMPORTANT PRODUCT INFORMATION  
AND SAFETY WARNINGS

- Equipment should be installed on a soft, resilient, energy-absorbing ground surface. NEVER INSTALL PLAY EQUIPMENT ON CONCRETE OR ASPHALT. A fall on a hard surface can result in serious injury to the equipment user.
- ALWAYS FOLLOW INSTALLATION INSTRUCTIONS WHEN ERECTING EQUIPMENT.
- Worn surface around equipment should be restored. Concrete footings should never be exposed. Surface depth should comply with installation instructions.

INSTALLATION INSTRUCTIONS AND PLAY AREA SURFACING

GENERAL NOTES:

- Inspect all pieces before unloading from truck for damages incurred during shipping.
- Leave as much packaging in place on play features as possible, without interfering with handling, to help protect the finish from damage during placement.
- Due to variables in local soil conditions, footing sizes may vary to meet local codes.
- Actual on-site conditions may vary and may require modifications to installation method.
- Use care and caution while handling play pieces. Make sure all points of contact are protected from lifting straps or other machinery that may damage the piece.
- Bracing materials may be required during installation.

INSTALLATION INSTRUCTIONS

NOTE: THIS SPECIFICATION BOOKLET SHOULD BE KEPT IN CUSTOMER'S FILE FOR FUTURE REFERENCE.

NOTE: Do not over tighten bolts. To over tighten may cause buckling or dimpling of some parts.

NOTE: Read installation instructions thoroughly before starting assembly.

STEP 1: Dig required footing hole, 24" dia. min x 18" depth min.

STEP 2: Fill footing hole with concrete.

NOTE: Allow 48 hours minimum for concrete to cure before installing play feature.

STEP 3: Position lifting strap around the Play Feature

and attach free ends to lifting machinery

NOTE: Lifting strap and lifting machinery rated for 500 lbs min.

NOTE: Lifting strap should be nylon to prevent damage to GFRC finish. If any other type of strap is used, use foam padding under the strap to prevent damage to GFRC finish.

STEP 4: Carefully place and center play feature onto fully cured concrete footing. Secure with wedge anchors (QTY 4).

STEP 5: After play feature is in place and secured, remove all remaining packaging material. Inspect feature for blemishes. Use included repair kit as needed.

REF.	DESCRIPTION	38109	38108L	38110	38110L	38218	38218L	38219	38219L	PART NUMBER
1	LARGE MUSHROOM	1	0	0	0	0	0	0	0	202190
1	LARGE MUSHROOM W/LABEL	0	1	0	0	0	0	0	0	202103
1	SMALL MUSHROOM	0	0	1	0	0	0	0	0	202191
1	SMALL MUSHROOM W/LABEL	0	0	0	1	0	0	0	0	202104
1	SMALL (BROWN) MUSHROOM	0	0	0	1	0	0	0	0	206030
1	SMALL (BROWN) MUSHROOM W/LABEL	0	0	0	0	1	0	0	0	206105
1	LARGE (BROWN) MUSHROOM	0	0	0	0	0	1	0	0	206040
1	LARGE (BROWN) MUSHROOM W/LABEL	0	0	0	0	0	0	1	0	206106
1	HARDWARE COMPLETE	1	1	1	1	1	1	1	1	206037
1	1/2" x 4 1/4" WEDGE ANCHOR	4	4	4	4	4	4	4	4	800082*

Unless Otherwise Specified, All Units of Measure are Each  
\*Included in Hardware

Warning: During Installation, Hardware And Small Parts Are Choking Hazards  
For Young Children. Store Unused Parts Appropriately Until Assembly is Completed.

Once Assembly is Completed, Remove Any Unused Parts From The Play Environment  
And Dispose/Save Them in A Secure Location.

Note: Peen Tee-Nuts and Flatwashers to match radius of pipe after assembly is complete.

Note: Locette (supplied by others) should be used on any non-patch hardware.

MUSHROOM HOPPER PARTS LIST, INSTALLATION

GENERAL NOTES:

- Inspect all pieces before unloading from truck for damages incurred during shipping.
- Leave as much packaging in place on play features as possible, without interfering with handling, to help protect the finish from damage during placement.
- Due to variables in local soil conditions, footing sizes may vary to meet local codes.
- Actual on-site conditions may vary and may require modifications to installation method.
- Use care and caution while handling play pieces. Make sure all points of contact are protected from lifting straps or other machinery that may damage the piece.
- Bracing materials may be required during installation.

INSTALLATION INSTRUCTIONS

NOTE: THIS SPECIFICATION BOOKLET SHOULD BE KEPT IN CUSTOMER'S FILE FOR FUTURE REFERENCE.

NOTE: Do not over tighten bolts. To over tighten may cause buckling or dimpling of some parts.

NOTE: Read installation instructions thoroughly before starting assembly.

STEP 1: Dig required footing hole, 24" dia. min x 18" depth min.

STEP 2: Fill footing hole with concrete.

NOTE: Allow 48 hours minimum for concrete to cure before installing play feature.

STEP 3: Position lifting strap around the Play Feature

and attach free ends to lifting machinery

NOTE: Lifting strap and lifting machinery rated for 500 lbs min.

NOTE: Lifting strap should be nylon to prevent damage to GFRC finish. If any other type of strap is used, use foam padding under the strap to prevent damage to GFRC finish.

STEP 4: Carefully place and center play feature onto fully cured concrete footing. Secure with wedge anchors (QTY 4).

STEP 5: After play feature is in place and secured, remove all remaining packaging material. Inspect feature for blemishes. Use included repair kit as needed.

REF.	DESCRIPTION	38111	38111L	PART NUMBER
1	TREE STUMP	1	0	202192
1	TREE STUMP W/LABEL	0	1	206159
1	HARDWARE COMPLETE	1	1	206037
1	1/2" x 4 1/4" WEDGE ANCHOR	4	4	800082*

Unless Otherwise Specified, All Units of Measure are Each  
\*Included in Hardware

Warning: During Installation, Hardware And Small Parts Are Choking Hazards  
For Young Children. Store Unused Parts Appropriately Until Assembly is Completed.

Once Assembly is Completed, Remove Any Unused Parts From The Play Environment  
And Dispose/Save Them in A Secure Location.

Note: Peen Tee-Nuts and Flatwashers to match radius of pipe after assembly is complete.

Note: Locette (supplied by others) should be used on any non-patch hardware.

TREE STUMP PARTS LIST, INSTALLATION

38111L

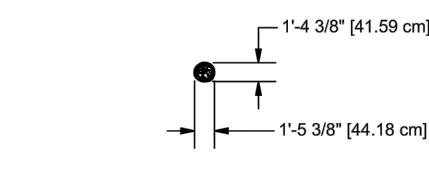
TREE STUMP W/LABEL

Gametime  
PLAYCOMP  
1-800-235-2440  
ISSUED/REVISED: 11/23/15

INSTALLATION  
DETAIL  
PARTS LIST  
REFERENCE



ASSEMBLY VIEW

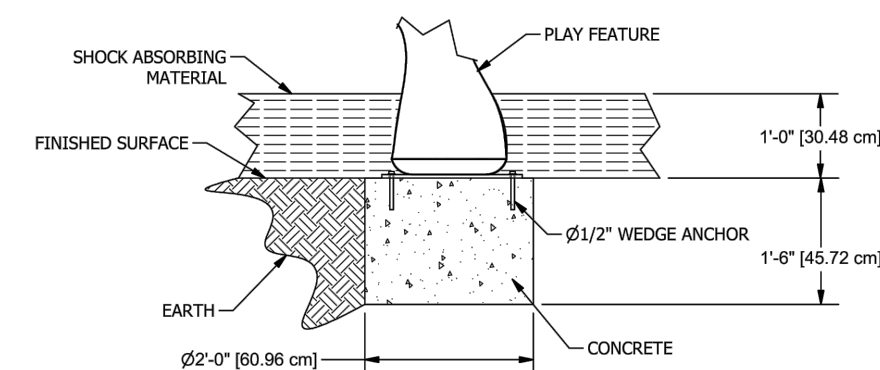


TOP VIEW

SPECIFICATIONS

Fiberglass Reinforced Cement (GFRC): A cement/aggregate slurry reinforced throughout with chopped glass fibers. Cement used shall be Type I Portland cement meeting the requirement of the ASTM C 150. Sand shall be washed silica sand passing a U.S. No. 20 sieve, and conforming to ASTM C 144. Glass fibers shall be alkali-resistant (AR) fiber specifically designed for use in concrete and chopped to 1"-2" lengths. Thickness of the cast panels shall be a minimum of 5/8" ranging to 1 1/2" depending on the face configuration. Embossing Mortar and

Cement Plaster: Site mixed cement/aggregate meeting the same criteria as 2.01 A, but omitting the glass fibers, for filling the irregular voids between mold-cast panels and/or special themed features. Backup Material: Shall be galvanized steel "diamond lath", tied in place with annealed steel wire and reinforced with #3 or #4 steel reinforcing rods. Minimum physical properties shall be: 1500 pounds per square inch in tension and 5000 pounds per square inch in compression.



NOTE:  
SUGGESTED MINIMUM CONCRETE  
RATING 3000 PSI.

CONCRETE REQUIRED:  
.175 CUBIC YARDS  
.134 CUBIC METERS

SHOCK ABSORBING PROPERTIES OF SURFACING MATERIALS VARY. IF YOU DETERMINE THAT LESS THAN 1" OF SURFACING IS REQUIRED, MAKE UP THE DIFFERENCE IN ELEVATION WITH EARTH, BEFORE APPLYING SURFACING.

TREE STUMP SECTION, ATTACHMENT

NOT TO SCALE

TREE STUMP

NOT TO SCALE