

STRATFORD HILLS- POLLINATOR GARDEN

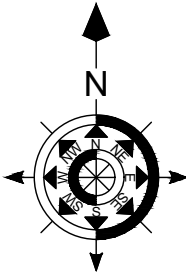
PREPARED FOR:
TAYLOR MORRISON

PREPARED BY:
 **POLLOCK & ASSOCIATES, INC.**
LANDSCAPE ARCHITECTS
ALPHARETTA, GA
770-569-5900

SCALE: 1/8" = 1'
DATE: 11/16/2022

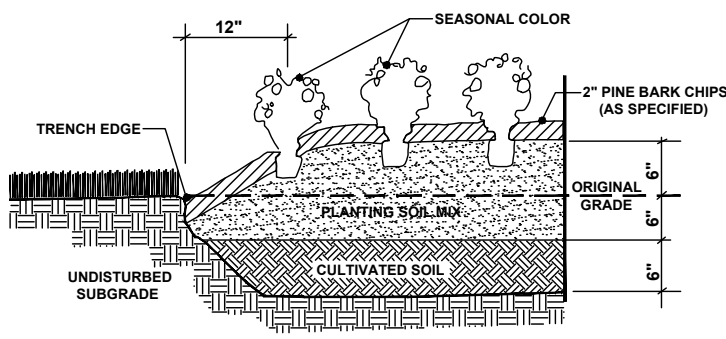
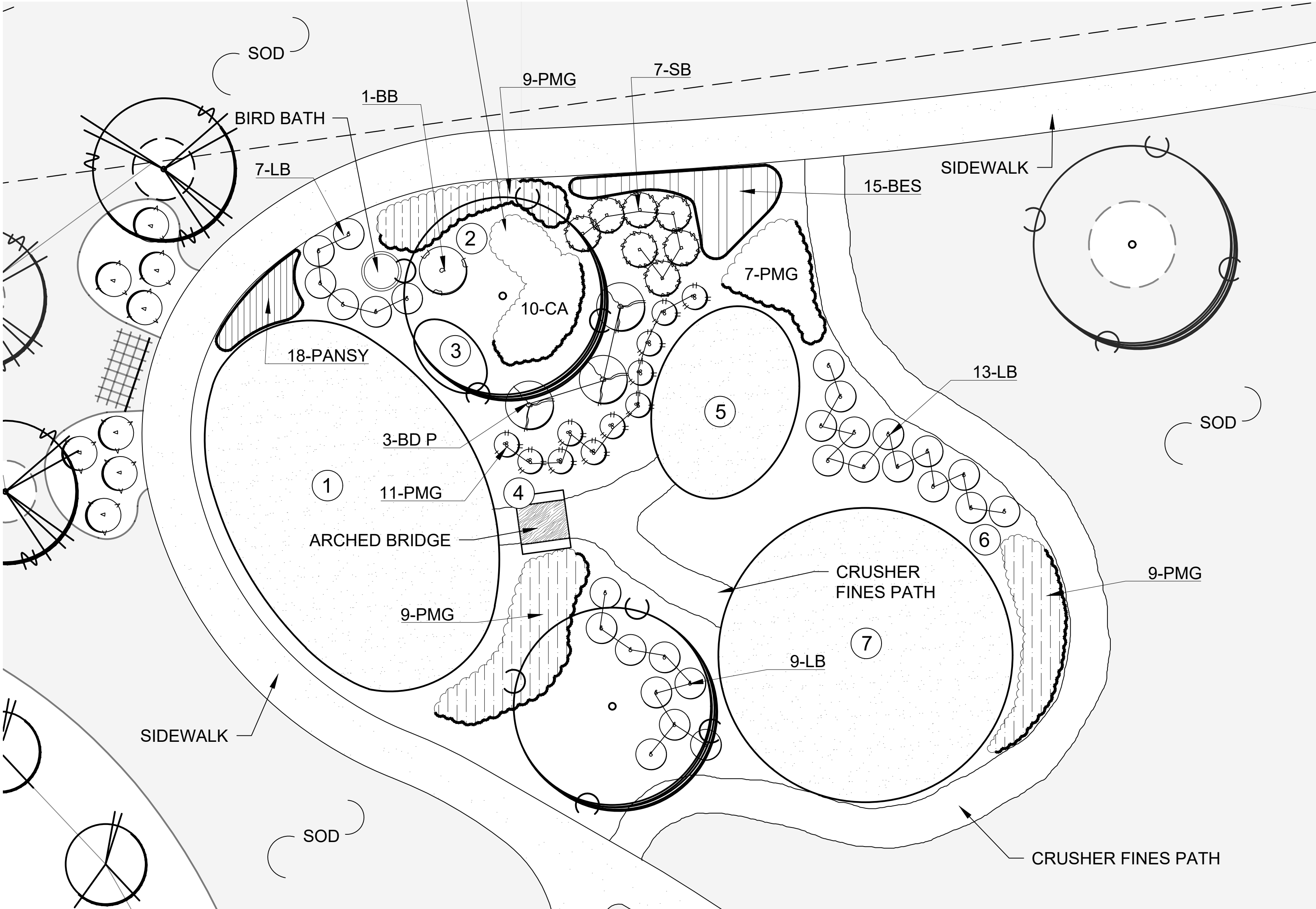


SCALE: 1/8" = 1'



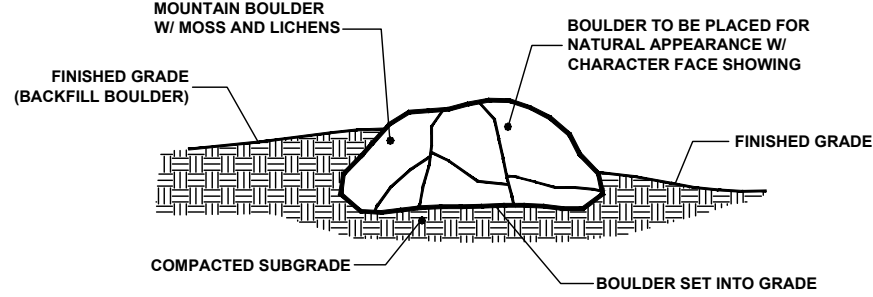
1. LOG AND STUMP BALANCE AREA
2. POLLINATOR GARDEN
3. NOOK W/ BOULDER SEATING AND LITTLE LIBRARY
4. ARCHED BRIDGE
5. GRAVEL PLAY AREA W/ BOULDER SEATING
6. NATIVE GRASSES
7. 11' ASCEND TOWER (KORKAT)

POLLINATOR GARDEN (± 1000)

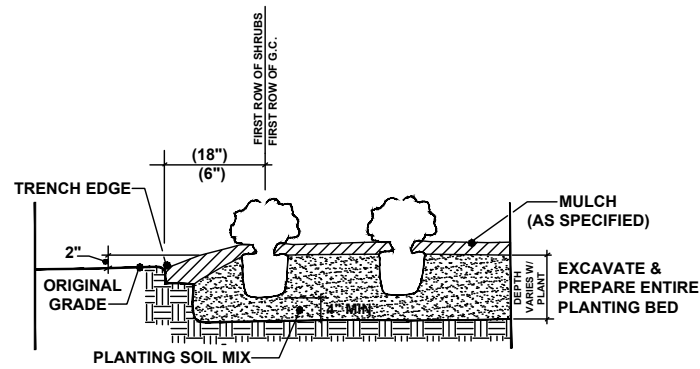


1. EXCAVATE SEASONAL COLOR PLANTING AREA TO A DEPTH OF 6\"/>
2. BREAK THROUGH & REMOVE ALL STONE, ROOTS, \"HARDPAN\", DEBRIS, ETC.
3. NOTOTILL EXCAVATED BED TO A DEPTH OF 6\"/>
4. ADD 4\" OF PLANTING SOIL & NOTOTILL INTO EXISTING SOIL.
5. ADD SUFFICIENT PLANTING SOIL TO RAISE ENTIRE BED 6\" ABOVE ORIGINAL GRADE.
6. ADD (1) LB. BONE MEAL PER 50 S.F. OF PLANTING AREA & HAND RAKE INTO TOP 2\" OF PLANTING SOIL. RAISE TO A CONSISTENTLY SMOOTH SURFACE.
7. PLANT ANNUALS, EDGE BED, & MULCH.
8. WATER THOROUGHLY.

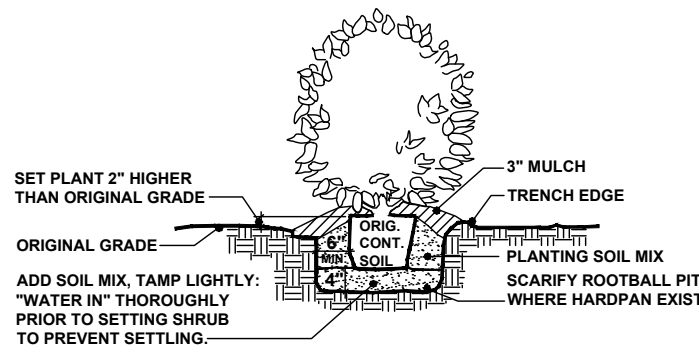
SEASONAL COLOR / GROUND COVER PREPARATION
NOT TO SCALE



TYPICAL LANDSCAPE BOULDER
NOT TO SCALE



TYPICAL SHRUB MASSING
NOT TO SCALE



TYPICAL SHRUB PLANTING
NOT TO SCALE

***NOTES:**

1. ALL PLANTS MUST BE HEALTHY, VIGOROUS MATERIAL, FREE OF DISEASE.
2. ALL PLANTS MUST BE CONTAINER GROWN OR BALLED AND BURLAPPED AS AS INDICATED IN THE PLANT LIST.
3. ALL PLANTS ARE SUBJECT TO APPROVAL BY THE LANDSCAPE ARCHITECT AND OWNER BEFORE, DURING, AND AFTER INSTALLATION.
4. ALL PLANT BEDS MUST BE COMPLETELY MULCHED WITH A MINIMUM OF THREE INCHES (3\") OF PINESTRAW MULCH IN ALL PLANT BEDS UNLESS OTHERWISE SPECIFIED.
5. TRENCH ALL BEDLINES (SEE DETAIL).
6. PRIOR TO CONSTRUCTION, THE LANDSCAPE CONTRACTOR IS RESPONSIBLE FOR LOCATING ALL UNDERGROUND UTILITIES AND SHALL AVOID DAMAGE TO SUCH UTILITIES DURING CONSTRUCTION.
7. ALL WORK UNDER THE LANDSCAPE CONTRACT IS TO BE MAINTAINED IN FULL BY THE LANDSCAPE CONTRACTOR UNTIL PROVISIONAL ACCEPTANCE BY THE LANDSCAPE ARCHITECT AND OWNER.
8. ALL BALLED AND BURLAPPED (B & B) MATERIAL SHALL EXCEED THE ROOTBALL SPECIFICATIONS SET FORTH IN AMERICAN STANDARDS FOR NURSERY STOCK, ANSI Z60.1-1989.
9. THE LANDSCAPE CONTRACTOR SHALL COMPLETELY GUARANTEE ALL PLANT MATERIAL FOR ONE (1) YEAR BEGINNING AT THE DATE OF PROVISIONAL ACCEPTANCE BY THE LANDSCAPE ARCHITECT AND OWNER, AND SHALL PROMPTLY MAKE ALL REPLACEMENTS BEFORE, OR AT THE END OF, THE GUARANTEE PERIOD, AS DIRECTED BY THE LANDSCAPE ARCHITECT.
10. REPLACEMENT OF FREEZE DAMAGED MATERIAL, OR THAT WHICH IS DAMAGED BY ACTS OF GOD ARE ITEMS TO BE NEGOTIATED BETWEEN OWNER AND LANDSCAPE CONTRACTOR.
11. PLANTING MIX TO BE 80% TOPSOIL, 20% NATURES HELPER UNLESS OTHERWISE SPECIFIED.
12. FERTILIZE ALL PLANT MATERIAL UPON INSTALLATION WITH OSMOCOTE (TOP DRESS) UNLESS OTHERWISE SPECIFIED.
13. ALL PLANTS ARE TO BE UNSHEARED UNLESS OTHERWISE SPECIFIED IN THE CHARACTER COLUMN OF THE PLANT LIST.

STRATFORD HILLS- POLLINATOR GARDEN

QTY	KEY	BOTANICAL NAME	PLANT LIST					
			COMMON NAME	HGT.	SPD.	ROOT	SPEC.	CHARACTER
1	BB	CALLICARPA AMERICANA	BEAUTYBERRY	30\"- 36\"	24\"- 36\"	3 GAL.	-	FULL, DENSE
3	BD-P	BUDDLEIA	BUTTERFLY BUSH (PINK)	24\"-30\"	18\"-24\"	3 GAL.	-	FULL, DENSE
FLOWERING PERENNIALS								
15	BES	RUDBECKIA FULGIDIA 'GOLDSTRUM'	BLACK - EYED SUSAN	12\"- 15\"	12\"- 15\"	1 GAL.	-	FULL, DENSE
10	CA	SYMPHYOTRICHUM LATERFORUM	CALICO ASTER	18\"-24\"	15\"-18\"	1 GAL.	-	FULL, DENSE
18	PANSY	VIOLA SP.	PANSY	2\"- 4\"	4\"-6\"	4\" POT	-	FULL, DENSE
7	SB	MONARDA PUNCTATA	SPOTTED BEEBALM	18\"	15\"- 18\"	1 GAL.		
ORNAMENTAL GRASSES								
29	LB	SCHIZACHYRIUM SCOPARIUM	LITTLE BLUESTEM	18\" - 24\"	18\"- 24\"	3 GAL.	-	FULL, DENSE
45	PMG	MUHLENBERGIA CAPILLARIS	PINK MUHLY GRASS	12\" - 15\"	12\" - 15\"	3 GAL.	-	FULL