



JORDAN OAKS
NATURE PLAY SPACE

OWNER:
TAYLOR MORRISON OF XX



DATE:
10.11.22

SHEET TITLE:


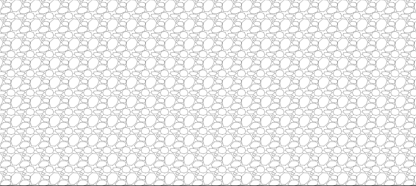

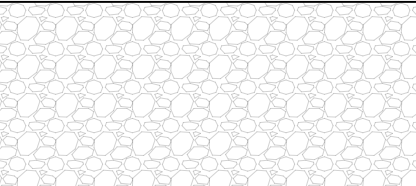
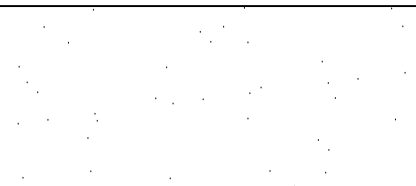
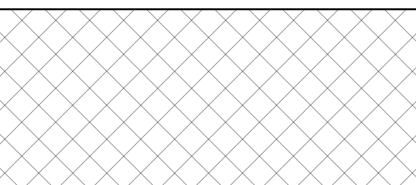
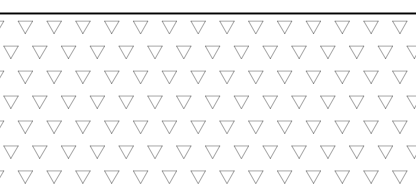
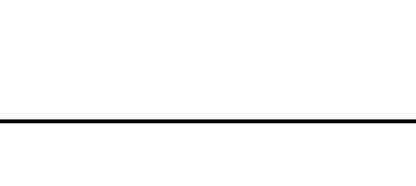
SITE LAYOUT

L1.0

KEY NOTES

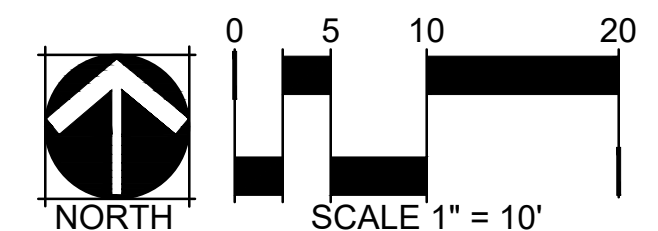
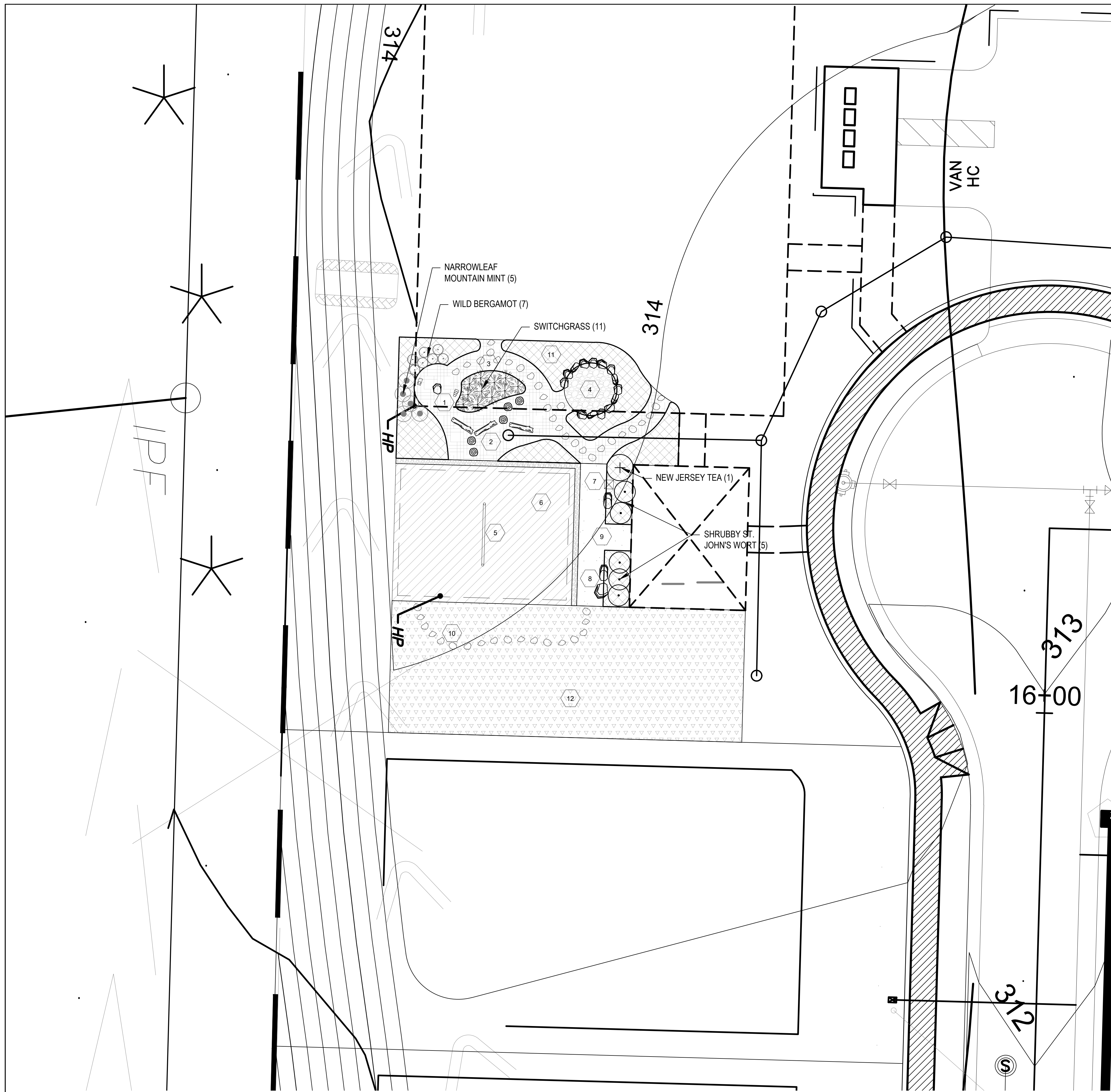
- 1 SENSORY NOOK WITH MAGNIFYING GLASS, LISTENING TUBES, AND SENSORY PLANTS
- 2 LOG AND STUMP BALANCE AREA
- 3 MULCH AND STEPPING STONE PATH
- 4 GRAVEL PLAY AREA WITH BOULDER BORDER
- 5 8 FEET HIGH ELITE SINGLE POST SWING - 1 BAY (PLAYGROUNDEQUIPMENT.COM)
- 6 ENGINEERED WOOD FIBER MULCH SAFETY SURFACE WITH COBBLE AND DEEP ROOT BARRIER ALONG BORDER
- 7 LITTLE LIBRARY
- 8 SITTING BOULDERS
- 9 CRUSHER FINES ENTRANCE AREA
- 10 STEPPING STONE POLLINATOR GARDEN PATH
- 11 NATIVE PLANT BEDS (THROUGHOUT PLAY AREA - PLANTING PLAN TBD)
- 12 POLLINATOR GARDEN

LEGEND

-  ENGINEERED WOOD FIBER MULCH
-  COBBLE EDGING
-  MULCH
-  GRAVEL PLAY
-  CRUSHER FINES
-  NATIVE PLANT BEDS
-  POLLINATOR GARDEN
-  14 GAUGE ROLL TOP STEEL EDGING AROUND NATIVE PLANT BEDS

NOTES:

- 1. ALL PLANTING SHOWN IS PROPOSED. PLANTING PLAN TO BE DETERMINED.
- 2. SEE ALL GRADING AND DRAINAGE PLANS FOR MORE INFORMATION. GRADING AND DRAINAGE ARE NOT DEFINED IN THIS SET.
- 3. LANDSCAPE AND BUILDING PRACTICES SHALL CONFORM TO ALL LANDSCAPE AND LAND DEVELOPMENT CODES OF APEX, NC.



CHECKED BY: SSB
DRAWN BY: EW